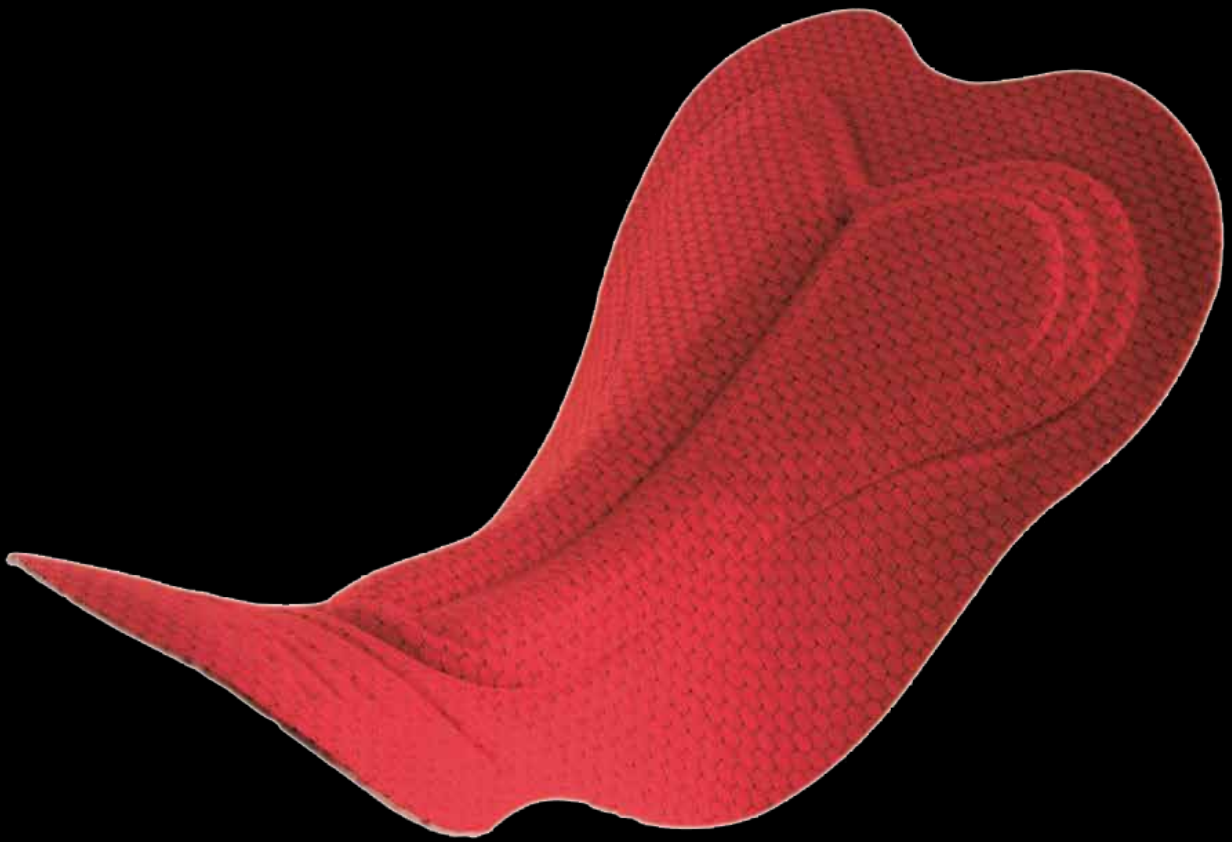


HUMANSPEED®



pad guide

2015021 ENDURANCE BIB

2014021 LONG DISTANCE AERO BIB

2016021 CLIMA SPEED BIB

2014022 LONG DISTANCE AERO BIB

2016022 CLIMA SPEED BIB WMNS

DURATION OF RIDE: FOR LONG DISTANCE.



The Comp HP is the evolution of the Multi-D Comp, one of our most successful cycling pads. The new version features premolded wings and an integrated top for a smooth, seamless look. While the overall dimensions are almost the same, the ultra high density foam inserts have been enlarged in order to deliver a greater degree of comfort during longer rides while in the road bike position. While keeping the minimalist, flat design of the original pad, the central channel has been slightly modified to provide more relief along the perineal area. A reduced usage of the back liner makes the pad even more lightweight and breathable, allowing greater freedom of movement.



Central channel in the perineal area and high density foams on both sides.



Varied thicknesses for best support in the different pressure points.



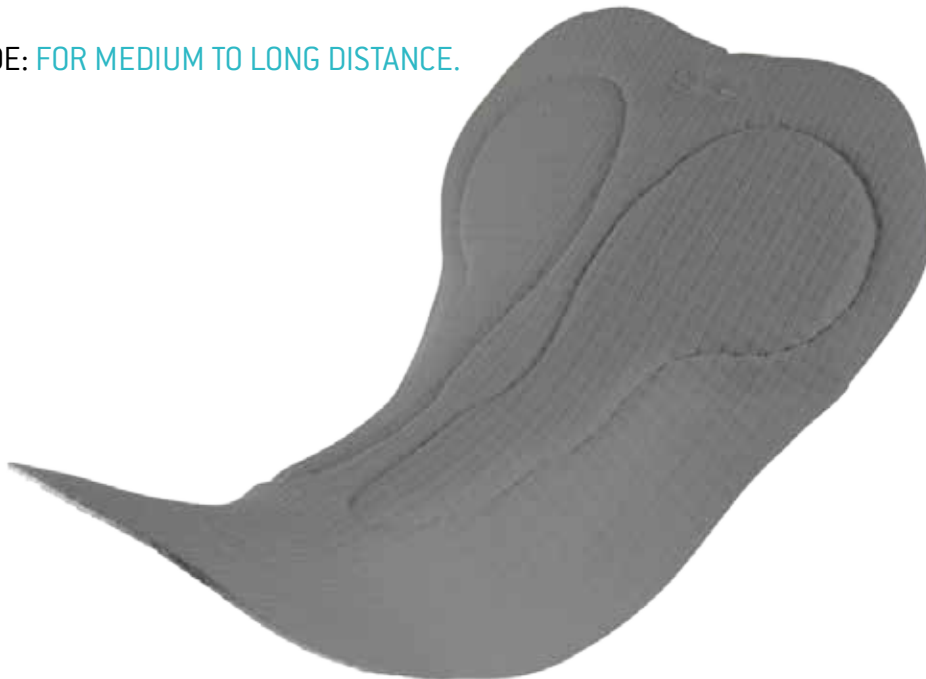
Three dimensional shape.

2013021 LONG DISTANCE PRO BIB

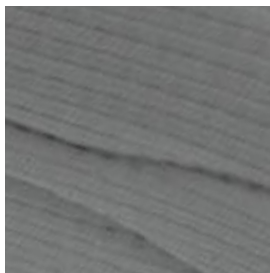
2013022 LONG DISTANCE PRO BIB WMNS

2013024 LONG DISTANCE BIB

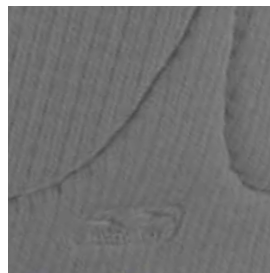
DURATION OF RIDE: FOR MEDIUM TO LONG DISTANCE.



Endurance 2 has centrally sewn inserts and is made with a generation of high density foams. Its special shape offers the absolute best protection and fit differentiating it from the Endurance Men. The X-Tract fabric has a double layer structure which helps collect and expel moisture. The perforated base layer provides increased breathability and quick dry. Endurance 2 Men is best for long rides.



Wide central channel with specially shaped foam inserts.



EIT X-Tract fabric for great breathability and quick dry.



Super Air base layer for maximum ventilation.

2013023 HIGH INTENSITY BIB

2013025 HIGH INTENSITY BIB WMNS

2013028 HIGH INTENSITY KNICKER

DURATION OF RIDE: **FOR MEDIUM DISTANCE.**

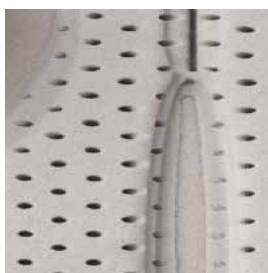


Bastogne is the latest addition to the “Medium Distance” category, a pad by the totally flat surface featuring an extremely minimalist design.

Apparently simple, the protective foam inserts and center channel are developed on the “underneath” portion of the pad, aspect that is usually much appreciated among those riders that prefer a smooth, flush surface with no areas of transition. As all EIT products the shaping of the central channel is engineered according to specific anthropometrical measurements, guaranteeing adequate protection and supporting male anatomy while in saddle, providing perfect fit, saddle stability and most importantly relieving pressure from the urethra, favoring blood flow. Also the “pelvic tract” area was tested and engineered to support the rotation of the pelvic bone on the saddle while pedaling. The perfect combination of perforated foams and different foam densities provide breathability and freedom of movement.



Central channel in the perineal area and high density foams on both sides.



Foams applied underneath allow for a flush, flat surface.



Three dimensional shape.

2013026 HIGH INTENSITY SHORT WMNS

2013029 HIGH INTENSITY KNICKERS WMNS SHORT

DURATION OF RIDE: LONG DISTANCE ROAD /MTB



Specially designed on female body for long distances, completely seamless SKYVING technology (no steps between layers) gives perfect anatomical shape Polyester surface ensure maximum breathability and moisture wicking thanks to holes textures on top fabric and elastic perforated foams Multi layers pad ensure protection around ischiatic area guarantees body stays cool and dry.

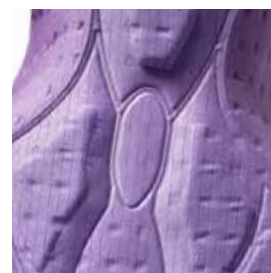
SURFACE FABRIC 100% pes elastic w/inwoven channels. Tested (martindale /pilling / drying time)



FOAMS 6mm Open Cell squared perforation foam 100% pes



8mm High Impact squared perforation Foam 100% pes



4mm Open Cell foam Full Jersey back

- 2017507 HUMANSPEED INTELLIGENT TRIATHLON SUIT MEN
- 2017511 HUMANSPEED INTELLIGENT TRIATHLON PANT MEN
- 2017513 HUMANSPEED INTELLIGENT TRIATHLON SUIT SLEEVES MEN
- 2017111 POWER PANT MEN
- 2017112 POWER PANT WMN ´S
- 2017113 POWER SUIT SLEEVES MEN
- 2017114 POWER SUIT SLEEVES WMN ´S
- 2017103 POWER SUIT MEN
- 2017104 POWER SUIT WMN ´S



TRI COMP MEN



TRI COMP WOMEN



A special multi-density insert is located in the perineal zone towards the nose of the saddle, where pressure peaks occur due to the typical low, aerodynamic tri position. The combination of perforated foams and plain soft wings provide superior elasticity in the inner leg area, maximum breathability and quick dry properties.

The new TRI COMP is the perfect combination between an essential and slim fitting tri pad and a protective road pad, for greater comfort over longer triathlon races. A special multi-density insert is located in the perineal zone towards the nose of the saddle, where pressure peaks occur due to the typical low, aerodynamic tri position. The combination of perforated foams and plain soft wings provide superior elasticity in the inner leg area, maximum breathability and quick dry properties.

Color: blue

Use: TRIATHLON
Fabric: EIT 8-FIFTY
Length / Width: 245 x 165 mm

Color: blue

Use: TRIATHLON
Fabric: EIT 8-FIFTY
Length / Width: 245 x 165 mm